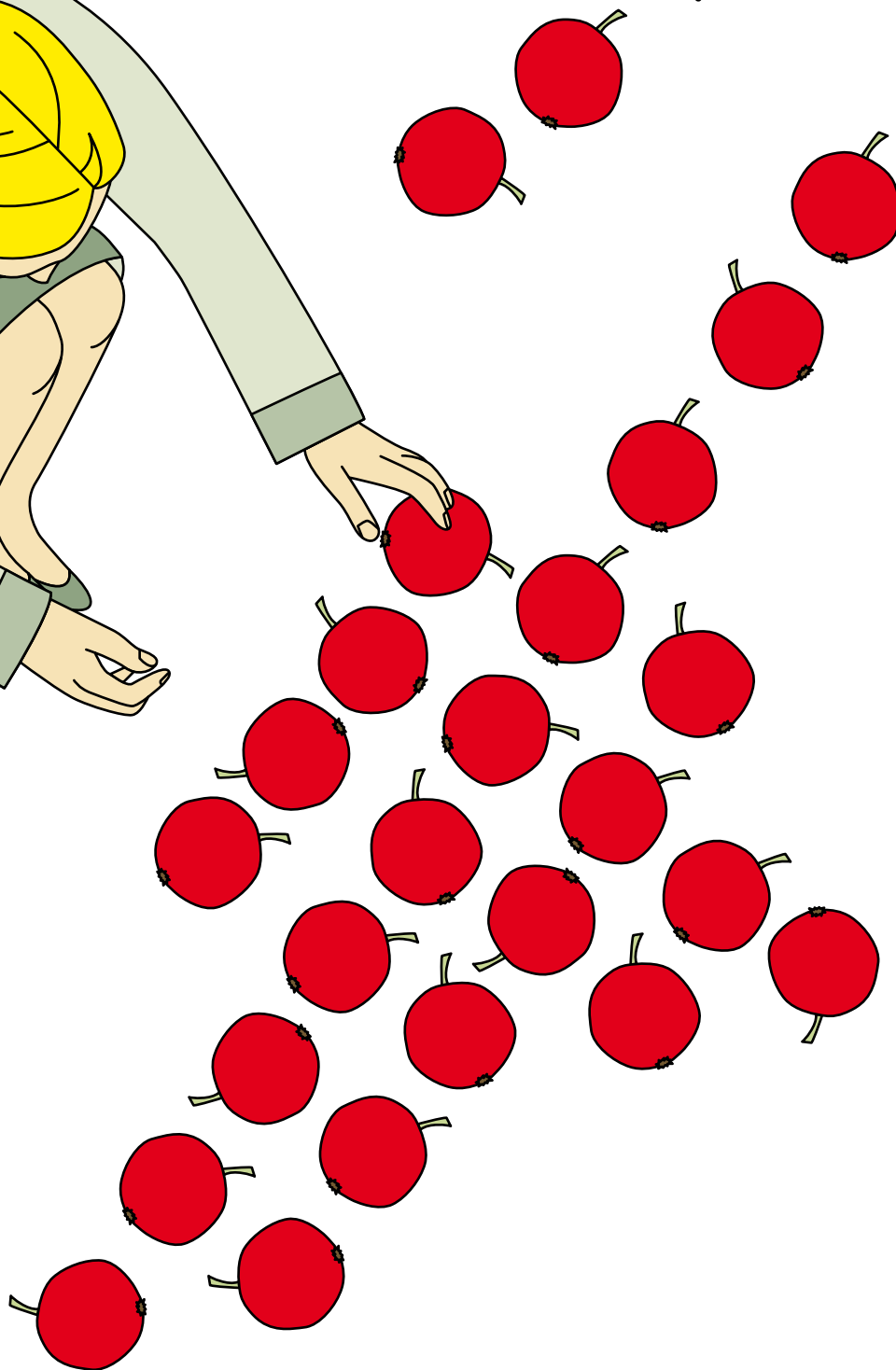
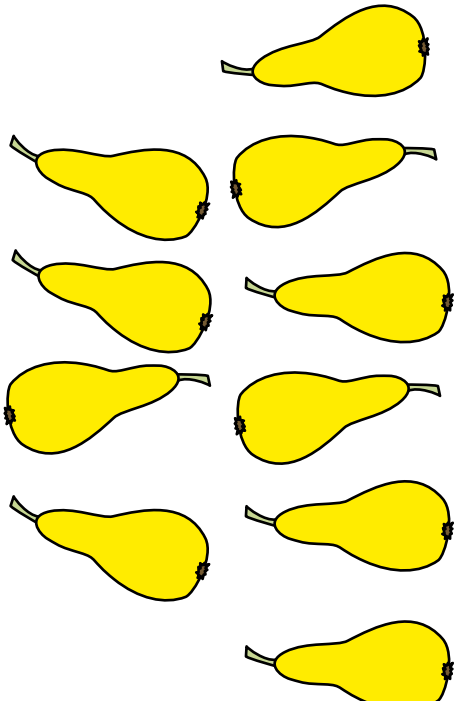
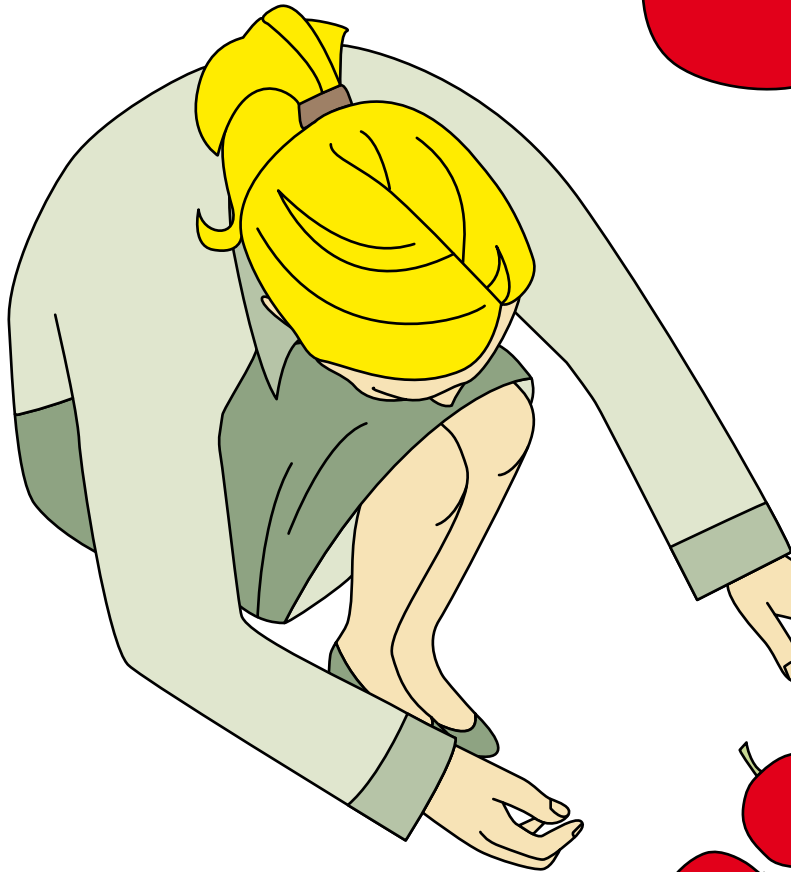


Kulturplaner^{GM}

Curtain up on your new integrated financial control system



Kulturplanner figures it out

Introducing Kulturplanner – the innovative solution to growing demands and shrinking subsidies. Curtain up on the software suite that does the number crunching for you and delivers results at the touch of a button! Your chance to save time and money, and stage financially successful events.

Do you know which theatre productions make most money? Or which exhibitions are the biggest draw? Kulturplanner gives you planning certainty. Because watching the purse strings is the key to successful arts projects. At last, Kulturplanner gives cultural organisations effective tools for their planning and budgeting, reporting and financial analysis. By pulling all the data together it gives you greater financial and artistic freedom.

A sure fire hit

Kulturplanner has been specially developed for arts organisations. And it has a proven track record like the internationally renowned technology that powers it — the Professional Planner family of financial planning and control solutions and the QlikView analysis tool. Kulturplanner delivers benefits all round.

– You save time and money

Your investment starts paying back the moment you power up. Kulturplanner can save 70 percent of the time spent on financial control. You devote less time to routine data entry and validation, allowing you to concentrate on the tasks that are closest to your heart.

– You have your fingers on the buttons

Do you need to know the week day when attendances are highest? Kulturplanner supports easy cross-platform data analysis, delivering all the details you need at the press of a button.

– You have all your data in a single system

Kulturplanner fetches the data it needs from external applications such as bookkeeping and ticketing systems. The benefits for you? All the financial control and management information you need comes from a single source.

– You get information you can rely on

All the mathematics and accounting functionality, such as links between income and cash flow statements, and balance sheets, are built into Kulturplanner. The underlying database ensures that the information you are accessing is reliable.

Kulturplanner integrates key data in a single system that supports all of an arts organisation's financial control processes.



Kulturplanner makes financial control easier for arts organisations – and sets you free.

How Kulturplanner works

Kulturplanner unites all the tasks and functions associated with financial control. It merges data from other systems, and is user-friendly thanks to its flexible interfaces. Find out for yourself!

All too often, the finance department at an arts organisation has to work with a variety of lists and systems, and must start from scratch each time to gain an overview. This is where Kulturplanner comes in. It is the easy-to-use professional tool designed for your management needs. Kulturplanner brings together all the key information in one system. The user interface is clear and simple, and child's play to use.

A system with flexible interfaces

Kulturplanner's flexible interfaces make integrating data from other systems quick and simple. Text and Excel files, financial and cost accounting applications, resource planning software or ticketing systems.

Clear interface, easy to operate

Kulturplanner's user interface is similar to Excel. It is easy to use and presents data clearly and attractively – an argument that should help to win over your paymasters.

Project and organisation focused

Kulturplanner supports you in all your financial control activities from financial analysis and planning through to performance monitoring and calculating key indicators. The focus can be on projects, departments or the whole organisation. Kulturplanner can generate results for given accounting periods, and beyond, and can summarise key data for your industry.

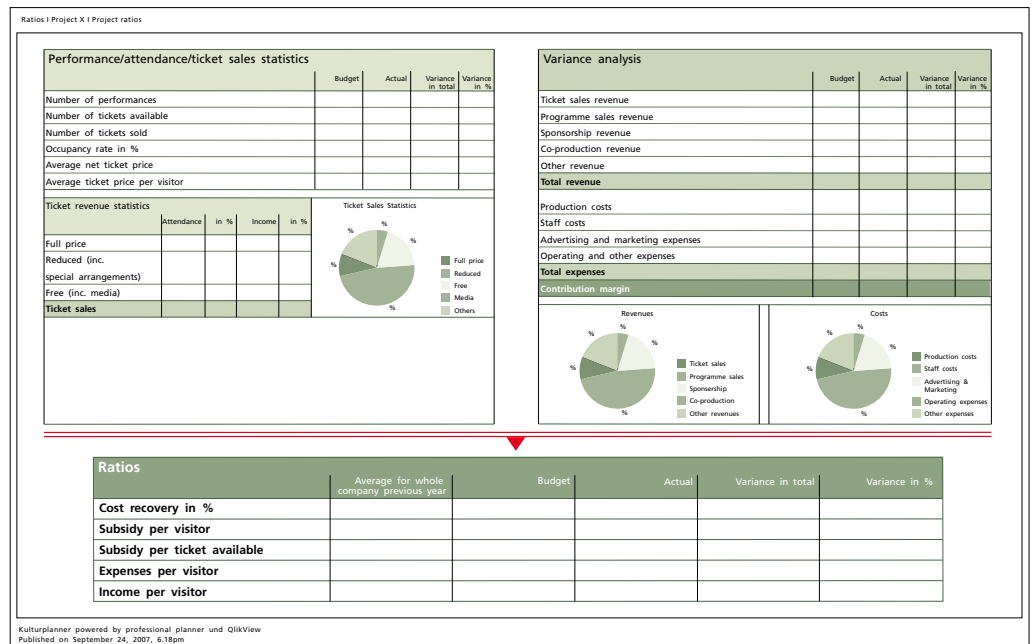
Kulturplanner combines all the main management control functions you need – including financial analysis, planning and budgeting, reporting, forecasting and indicator generation – in a single solution. It allows arts organisations to plan, report and analyse on time and error free.

Data importation from front-end systems

- Kulturplanner quickly and simply integrates data from a range of front-end systems including bookkeeping and cost accounting, ticketing and resource planning systems.
- Kulturplanner features flexible interfaces for importing a variety of formats including text, Excel and csv. Data can also be accessed via OLE DB and ODBC.

Benchmarking comparison

Kulturplanner gives you access to industry data. You can benchmark your business and projects against performance indicators and aggregated data as an aid to decision making.



Kulturplanner is The solution for integrated management control. It is user friendly, and saves time and money.

"Only if you know where your money is going can you decide where it ought to be. Our software can help you do this."
Dr. Wolfgang Graf und Susanne Moser,
the developers of Kulturplanner

The people behind Kulturplanner

Kulturplanner is a co-production by Graf Moser, Winterheller and QlikTech – three strong partners whose creative industry and software experience complement each other perfectly.

Kulturplanner was developed by Graf Moser Management GmbH using Winterheller's Professional Planner and QlikTech's QlikView software as platforms.

GRAF MOSER MANAGEMENT GMBH

Dr. Wolfgang Graf and Susanne Moser started developing business management tools for the creative industries and arts organisations in 2004. The company focuses on business plans, budgeting and financial control solutions.

www.grafmoser.com

WINTERHELLER SOFTWARE GMBH

The Professional Planner software that Kulturplanner is based on comes from Winterheller. Over 4,500 companies worldwide use these solutions. Winterheller has 150 employees, and has offices all over Europe, and a global distribution network.

www.winterheller.com

QLIKTECH INTERNATIONAL AB

The QlikView analysis tool with its advanced in-memory technology is from QlikTech. QlikTech is the world's fastest growing business intelligence software producer, and already has over 6,000 customers in 70 countries.

www.qliktech.com

Want to find out more about Kulturplanner?

For more information visit www.kulturplanner.com oder send an e-mail to office@kulturplanner.com.

Published by:

Graf Moser Management GmbH

Krugerstrasse 17/2, A-1010 Vienna

tel:+43 (0)1 513 02 50; fax: +43 (0)1 513025020

e-mail: office@grafmoser.com

Graphic design and illustrations: Veronika Neubauer

Copy: Verocai&Riedmann

Copyright 2007 Graf Moser Management GmbH. All rights reserved. "Graf Moser", "Kulturplanner", the Graf Moser logo and the Kulturplanner logo are trademarks of Graf Moser. Reference to other companies and their products use trademarks owned by the respective companies and are for reference purpose only. No portion hereof may be reproduced or transmitted in any form or by any means, electronic or mechanical, including photocopying, recording, or information storage and retrieval systems, for any purpose other than the recipient's personal use, without the express written permission of Graf Moser. The information contained herein is subject to change without notice. Graf Moser shall not be liable for errors contained herein or consequential damages in connection with performance or use hereof. Any Kulturplanner software described herein is licensed exclusively subject to the conditions set forth in the Kulturplanner license agreement.